



Corebiotech Co., Ltd.

# MAX-PREP SYSTEM

Liquid based cytology test kits by Corebiotech!



**DOKU**  
DIAGNOSTICS



This equipment can be carried out not only the screening of gynecological samples, but also FNA, sputum, urine, tuberculosis and biological fluids diagnostic.

# MAX-PREP



**60 Slides per hour**

All important cells are smeared without any damages. Clear cell view, Simple operation, Very compact size.

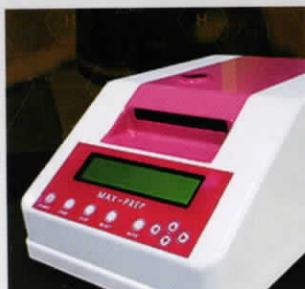
• **Compact and light**

**Dimensions:**

280 (W) x 400 (D) x 200 (H),

**Weight:**

10 kg



## Smart

Convenient slide preparation



## Excellent 1

High speed:  
60 slides per hour



## Excellent 2

High Quality: by  
dual membrane  
filtration method

- "MONOLAYER" appearance
- Various processes
- Compact and light
- Easy control & Simple Operation

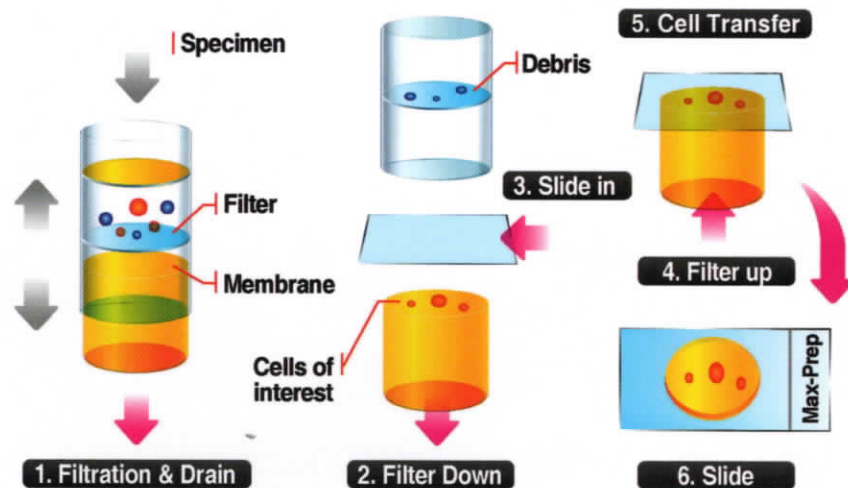


# Preservative Solution



- **Collect**  
Preservative solution for Gyn and Non-gyn • Cyto-brush
- **Safe**  
Ethanol Based • Clean Background • Reproducibility (20ml containing) • Enable with user programmable setting options
- **Adequate**  
Abundant cellular smear pattern • Morphology (Cell form is keeping well)
- **Various applications**  
Covering from the GYN specimens and Sputum, FNA, Urine and Body fluid.

## Filtration Method



## Filter & Slide

### Membrane Filter

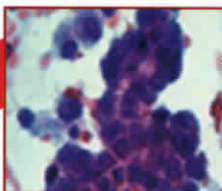
- Removes inflammatory cells & Cellular debris.
- No DNA carryover since instrument doesn't sample primary vial
- Adjustable processor parameters for various sample types.
- Membrane filter diameter: 20 mm

### Microscope slide (coated slide)

- Microscope slide (coated slide)
- 1.0-1.2mm and 1.0mm thick in dimensions of 25.4 x 76.2mm (1" x 3"); 25 x 75mm, 26 x 76mm.
- Ground edges
- Precleaned 100 slides per box
- Slide diameter: -20mm



**GYN**



Breast - Ductal carcinoma



Cervix-HPV

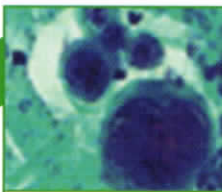


Cervix

**Cervical cancer · Uterine · Endometrial cancer**

- Cervix, brushing or Washing, Endometrial Suction
- Abundant cellular smear pattern

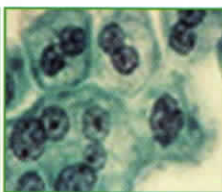
**Urine**



Urothelial cell carcinoma (Low grade)



Urothelial cell carcinoma (in situ)

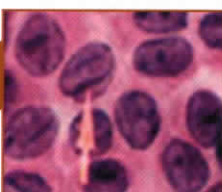


Urothelial cell carcinoma (High grade)

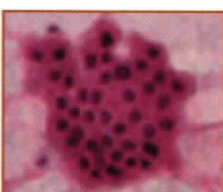
**Bladder cancer · Kidney cancer**

- Voided Urine, Bladder Washing
- Minimize cytologic degeneration

**FNA**



Groove



Thyroid gland follicle cell

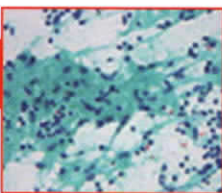


Pseudoinclusion

**Breast cancer · Thyroid cancer · FNA**

- Clear background of cellular smear By eliminating bloods & fluid of tissue. The Generation FNA enabled to Making cell block

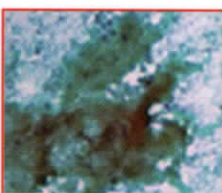
**Sputum**



Epithelioid cells



Squamous cell carcinoma



Caseous necrosis

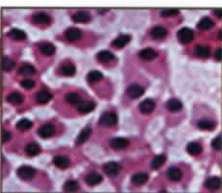


Bronchogenic adenocarcinoma

**Lung cancer · Tuberculosis, etc.**

- Sputum, Bronchial Washing
- Clean background by eliminating Mucus as Sample Pre-preparation

**Body Fluid**



Epithelioid cells



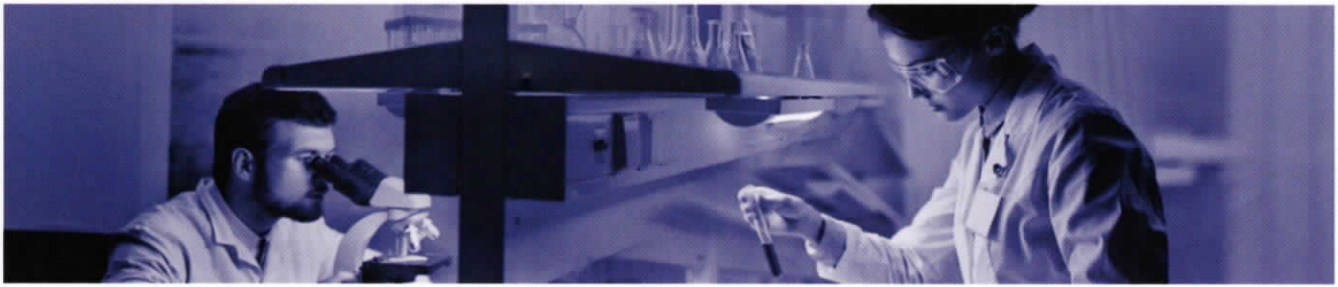
Squamous cell carcinoma

**Test Target: Metastasis or Recurrence of Malignant Tumor**

- Specimen collecting: Cerebrospinal Fluid, Pleural Effusion, Peritoneal fluid, Pericardial fluid
- Test Merit: Superior cellular preservation by Preventing Degeneration of protein





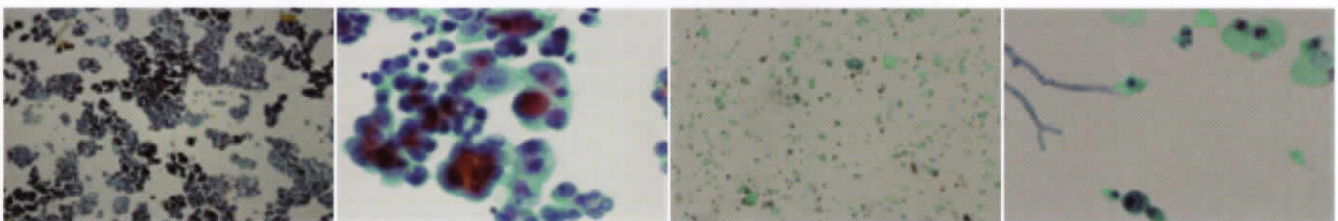


# Specifications

## Processor

Product Name	Liquid based cytology processor
Input Power	AC 220V 50Hz
Maximum Power Consumption	37W
Characteristics	<ul style="list-style-type: none"> <li>• Dual membrane filtration method</li> <li>• Various applications</li> <li>• Superior reproducibility</li> </ul>
Dimensions	280x400x200
Output Power	DC 12V 5A
Weight	10 kg

## MAX-PREP Prepared Slides





Oruç Reis Mah. Giyimkent 3 Sk. No:21A-23A Esenler/İSTANBUL - Turkey



+90 0532 616 72 86



+90 0212 438 66 10



+90 0212 438 67 10



info@dokudiagnosics.com



www.dokudiagnosics.com



DOKU is a **DIAFARMA** subsidiary.

Pharmaceutical and Medical Products